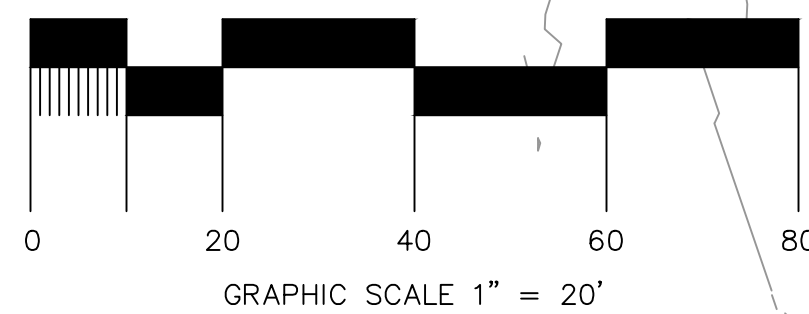
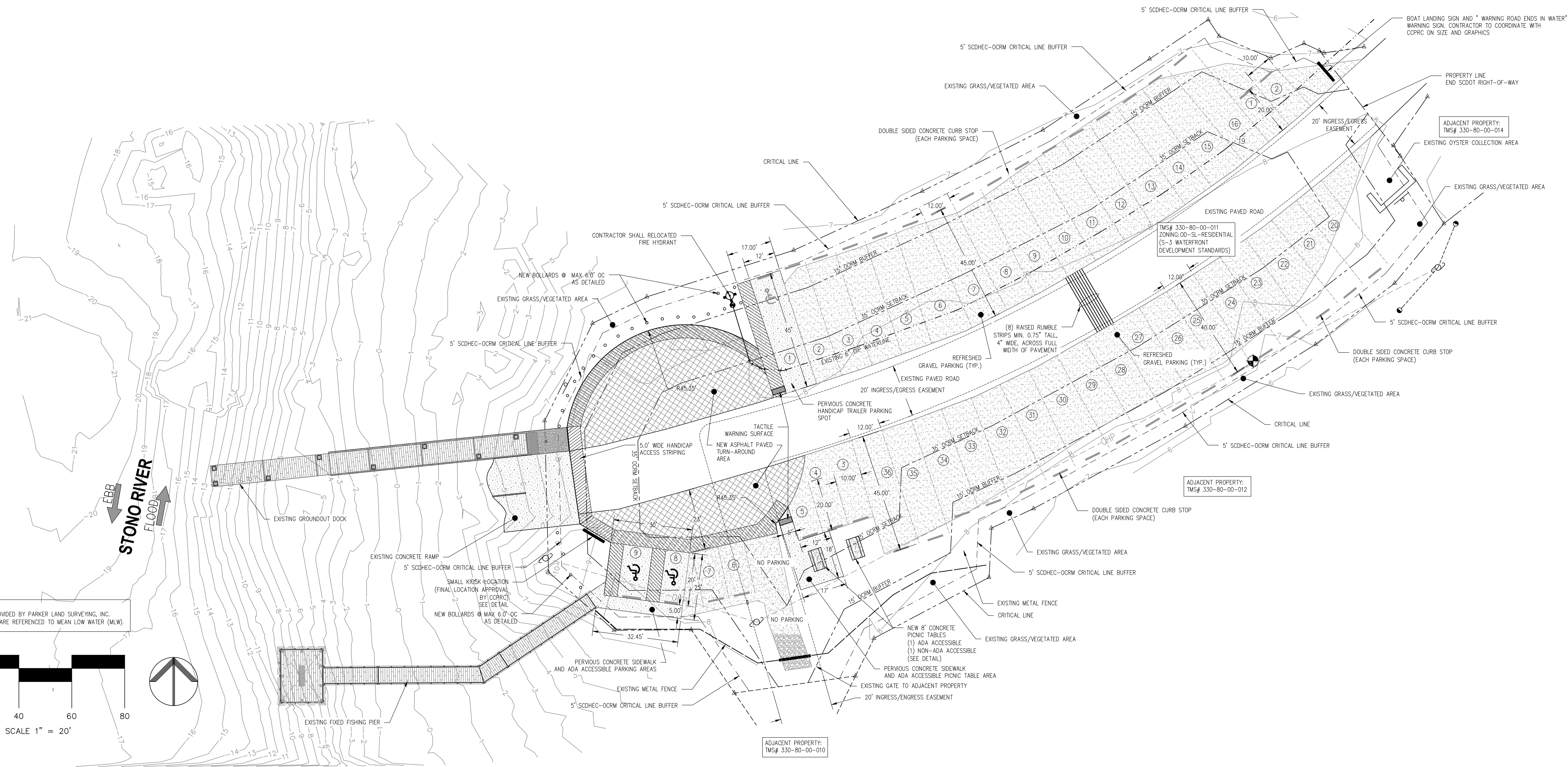


NOTE:
SURVEYING INFORMATION PROVIDED BY PARKER LAND SURVEYING, INC.
ALL ELEVATIONS/CONTOURS ARE REFERENCED TO MEAN LOW WATER (MLW).



OVERALL SITE IMPROVEMENTS LAYOUT PLAN

SCALE - 1"=20'



7	
6	
5	
4	
3	
2	
1	04.13.21
	REVISION
	DATE

DRAWING TITLE
SITE IMPROVEMENT PLAN
SOL LEGARE BOAT LANDING PARKING IMPROVEMENTS
(PHASE 2)
LOCATED ON THE STONO RIVER, SOL LEGARE ROAD
CHARLESTON COUNTY, SOUTH CAROLINA

DESIGNED: CWM
DRAWN: CWM
APPROVED: CWM
SCALE: AS SHOWN
FILE: SOLLEGARE-D-BASE-P12
DATE: 07/29/2021
PROJ. NO.:

Jon Guerry Taylor & Associates, Inc.
ENGINEERS, PLANNERS, and ENVIRONMENTAL CONSULTANTS
P.O. BOX 1082, MOUNT PLEASANT, SOUTH CAROLINA 29465
PHONE: 843.884.8415; FAX: 843.884.4026
EMAIL: INFO@JGTINC.COM; WEB: WWW.JGTINC.COM

This drawing and the design contained on it are the property of Jon Guerry Taylor & Associates, Inc., and are protected by Federal Copyright Laws. This drawing contains design information developed for this specific project and may not be used in whole or in part without our express written permission. Violators will be punished to the fullest extent of the law.