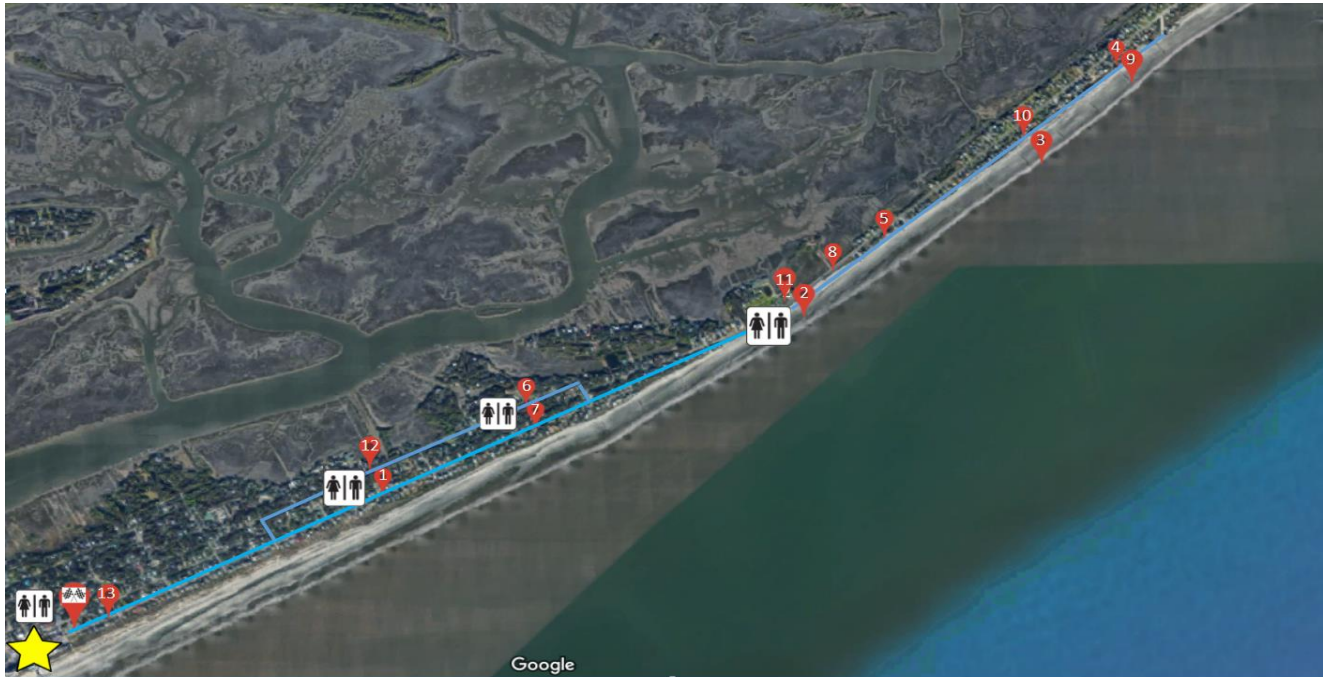



Save the Light Half Marathon Course



- Bathrooms located at:
 - Start/finish
 - Intersection of Ashley Avenue and 12th Street
 - Intersection of E. Cooper and 7th Street
 - Mile marker 11
- Water stations located at:
 - Start/finish
 - Intersection of E. Cooper and 7th Street
 - Mile marker 11
-  Indicates Tides Hotel/Folly Beach Fishing Pier